

GENERAL NOTES:

KEYNOTES

- 401. EXISTING CMU WALL
- 403. CMU WALL BAND PER C6/A6.0
- 404. BASE BUILDING WAINSCOT PER E5/A6.0
- 501. ALUMINUM TRELLIS PER D5/A6.0
- 502. BICYCLE RACK
- 602. BASE BUILDING CORNICE PER D6/A8.0
- 704. EXISTING ROOF DRAIN AND OVERFLOW SCUPPERS, TYP.
- 805. COMPACTOR DOOR
- 906. PAINT PTD1 PER FINISH SCHEDULE
- 907. PAINT PTD2 PER FINISH SCHEDULE
- 3202. PLANTING PER LANDSCAPE

ARCHITECTS  
**MOSHER  
DREW**  
DESIGN + PLANNING

1773 HANCOCK STREET  
SAN DIEGO, CALIFORNIA 92110  
TELEPHONE (619) 223-2400  
FAX NO. (619) 223-3017

SUITE 150  
92110  
(619) 223-2400  
(619) 223-3017

PRELIMINARY  
NOT FOR  
CONSTRUCTION

PACIFICA RIALTO  
**PACIFICA COMPANIES**  
1610 S. RIVERSIDE AVENUE  
RIALTO, CA 92376

Project Number : 17000.00  
Date : 04-26-2018  
Drawn By : SL  
Checked By : WAM  
Revisions :

▲  
▲  
▲

EXTERIOR  
ELEVATIONS

A3.0

SHEET 16 OF

CONSTRUCTION DOCUMENTS - PRELIMINARY NOT FOR CONSTRUCTION





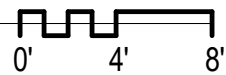




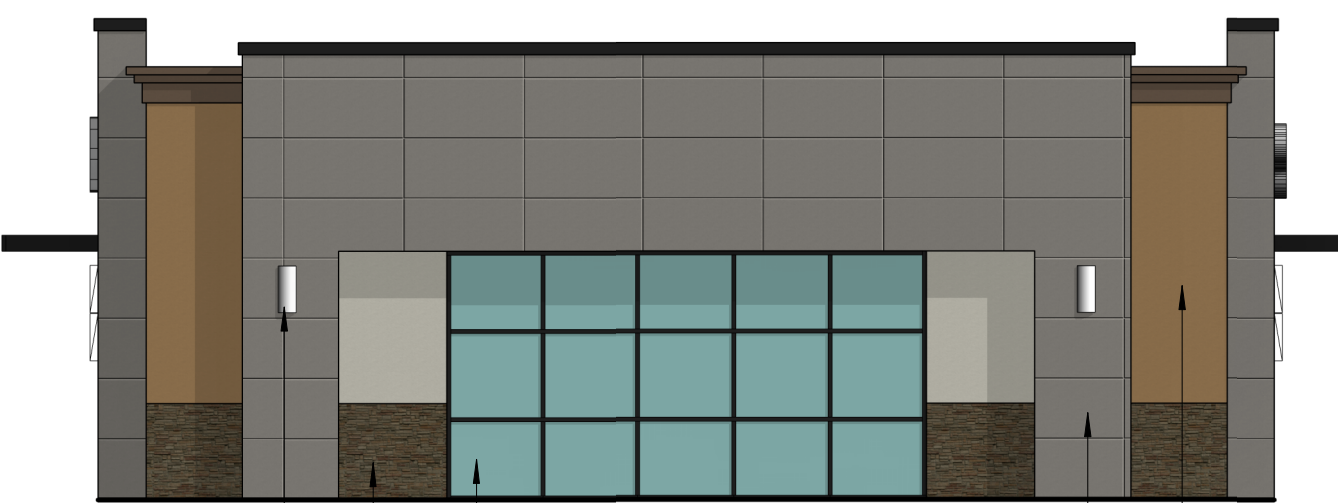
2 RETAIL 01 - NORTH  
AE3.2 1/8" = 1'-0"



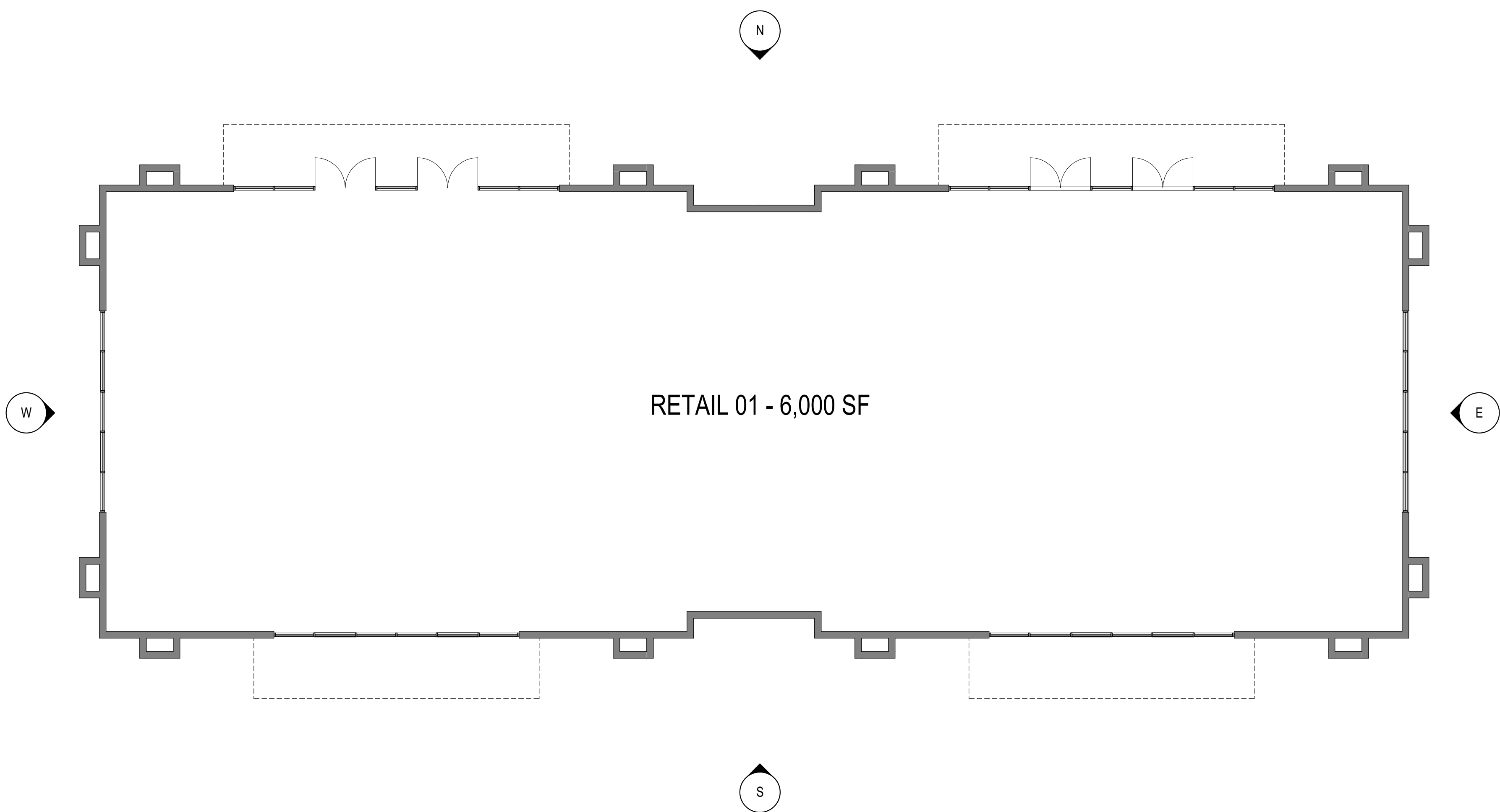
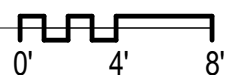
3 RETAIL 01 - EAST  
AE3.2 1/8" = 1'-0"



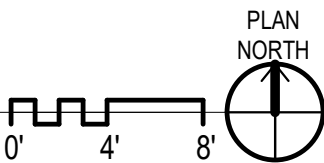
4 RETAIL 01 - SOUTH  
AE3.2 1/8" = 1'-0"



1 RETAIL 01 - WEST  
AE3.2 1/8" = 1'-0"



E1 SITE PLAN - RETAIL 01  
AE3.2 1/8" = 1'-0"



#### BUILDING CODE INFORMATION

CONSTRUCTION TYPE: VB  
GROSS AREA: 6,000 SF  
OCCUPANCY: M  
OCCUPANT LOAD: 100

ARCHITECTS  
**MOSHER  
DREW**  
DESIGN + PLANNING

1773 HANCOCK STREET  
SAN DIEGO, CALIFORNIA 92110  
TELEPHONE (619) 223-2400  
FAX NO. (619) 223-3017

SUITE 150  
92110  
(619) 223-2400  
(619) 223-3017

PRELIMINARY  
NOT FOR  
CONSTRUCTION

PACIFICA RIALTO

PACIFICA COMPANIES  
1610 S. RIVERSIDE AVENUE  
RIALTO, CA 92376

Project Number : 17000.00  
Date : 04-26-2018  
Drawn By : SL  
Checked By : WAM

Revisions :  
▲  
▲  
▲  
▲

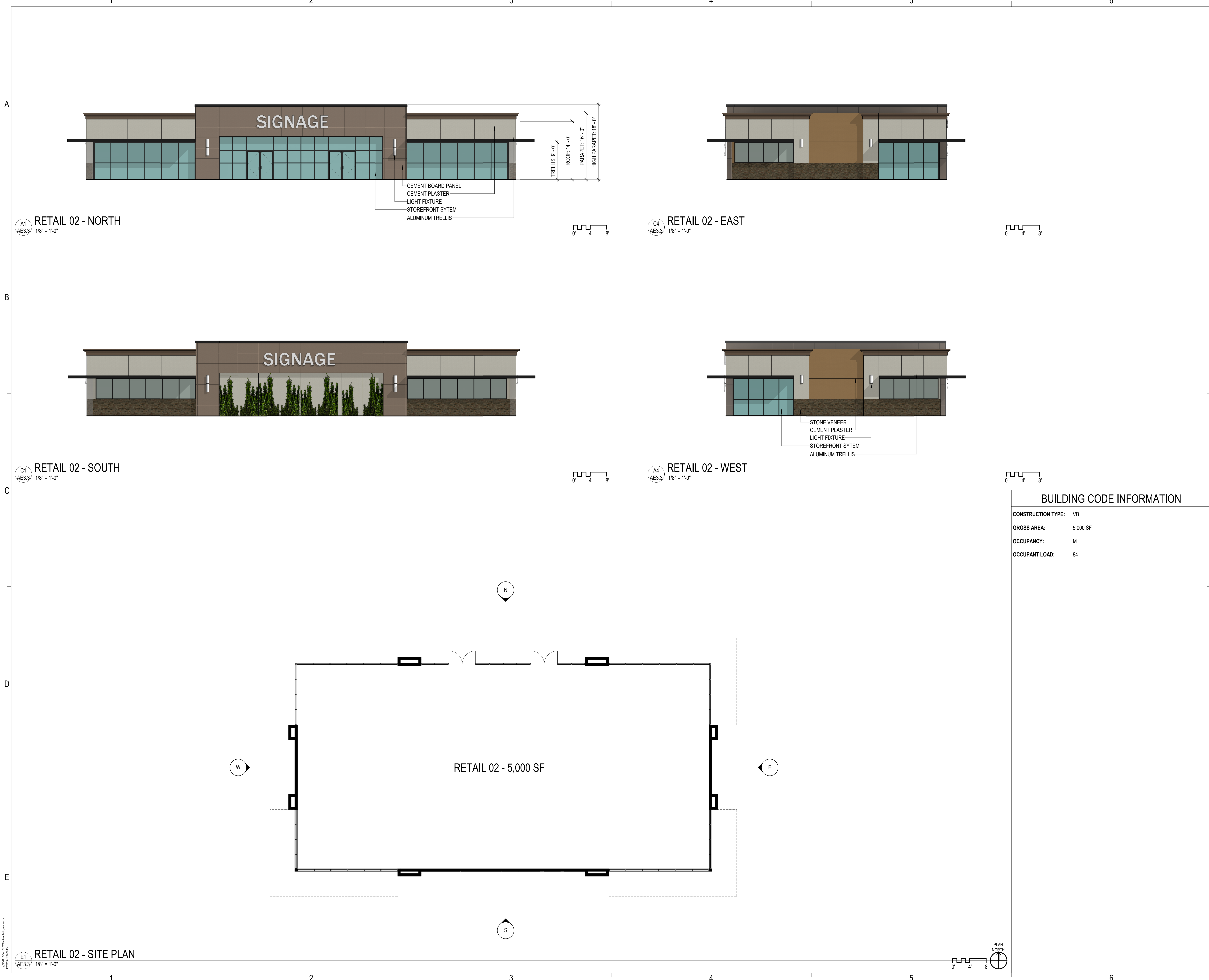
RETAIL 01

AE3.2

SHEET OF

CONSTRUCTION DOCUMENTS - PRELIMINARY NOT FOR CONSTRUCTION





ARCHITECTS  
MOSHER  
DREW

DESIGN + PLANNING

1773 HANCOCK STREET  
SAN DIEGO, CALIFORNIA 92110  
TELEPHONE (619) 223-2400  
FAX NO. (619) 223-3017

SUITE 150  
92110  
(619) 223-2400  
(619) 223-3017

All ideas, designs, and arrangements indicated on these drawings are intended to be used in connection with this specific project only and shall not otherwise be used for any purpose whatsoever without the written consent of Architects Mosher Drew. There shall be no changes or deviations from these drawings or the accompanying specifications without the written consent of Architects Mosher Drew.

PRELIMINARY  
NOT FOR  
CONSTRUCTION

PACIFICA RIALTO

PACIFICA COMPANIES  
1610 S. RIVERSIDE AVENUE  
RIALTO, CA 92376

Project Number	: 17000.00
Date	: 04-26-2018
Drawn By	: SL
Checked By	: WAM
Revisions	:

RETAIL 02

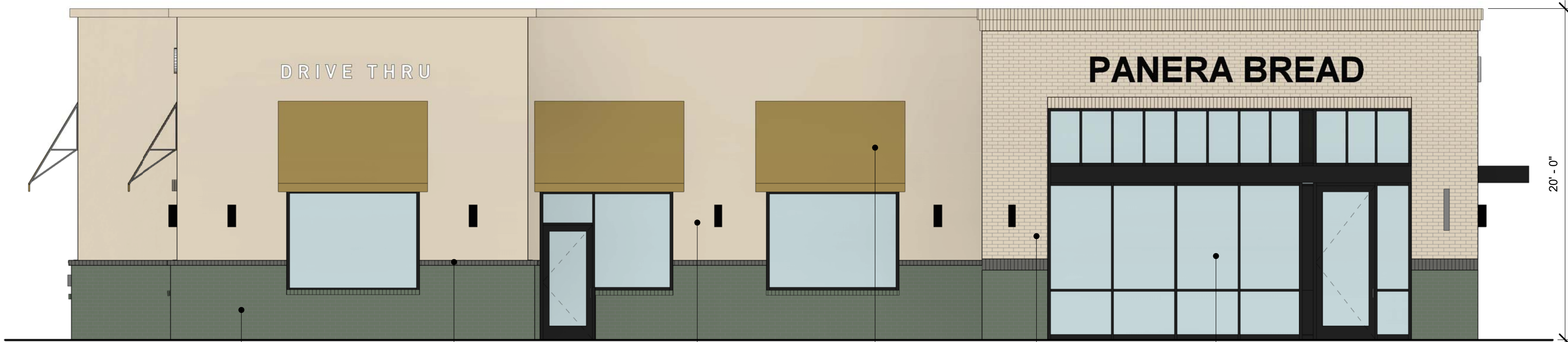
AE3.3

SHEET 8 OF

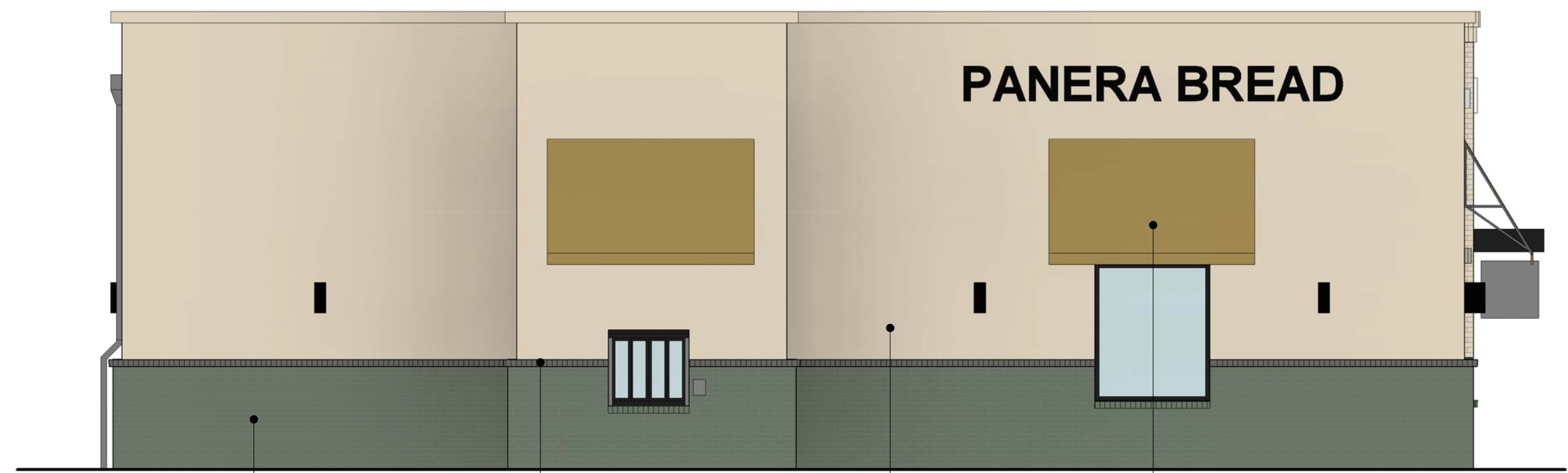
CONSTRUCTION DOCUMENTS - PRELIMINARY NOT FOR CONSTRUCTION



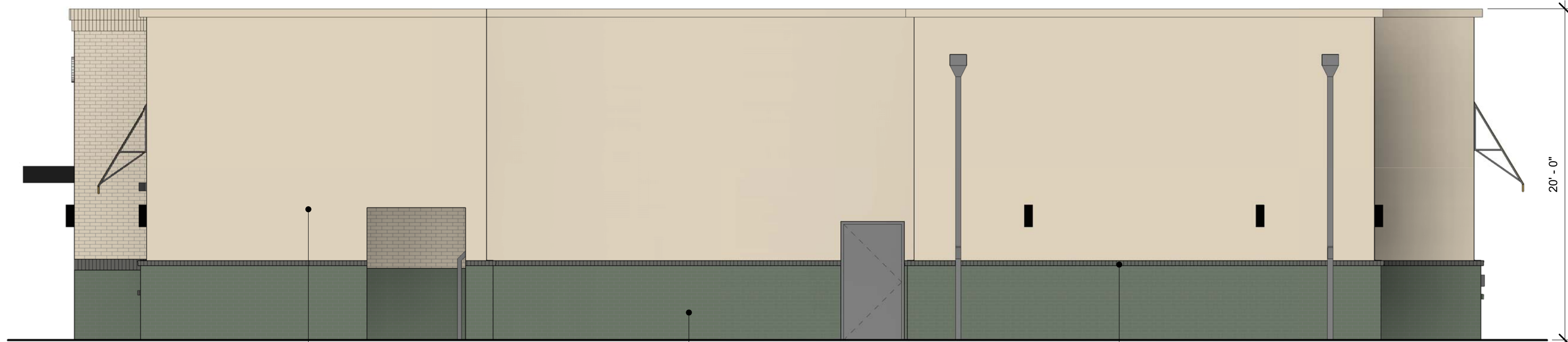
2/5/2018 10:16:13 PM



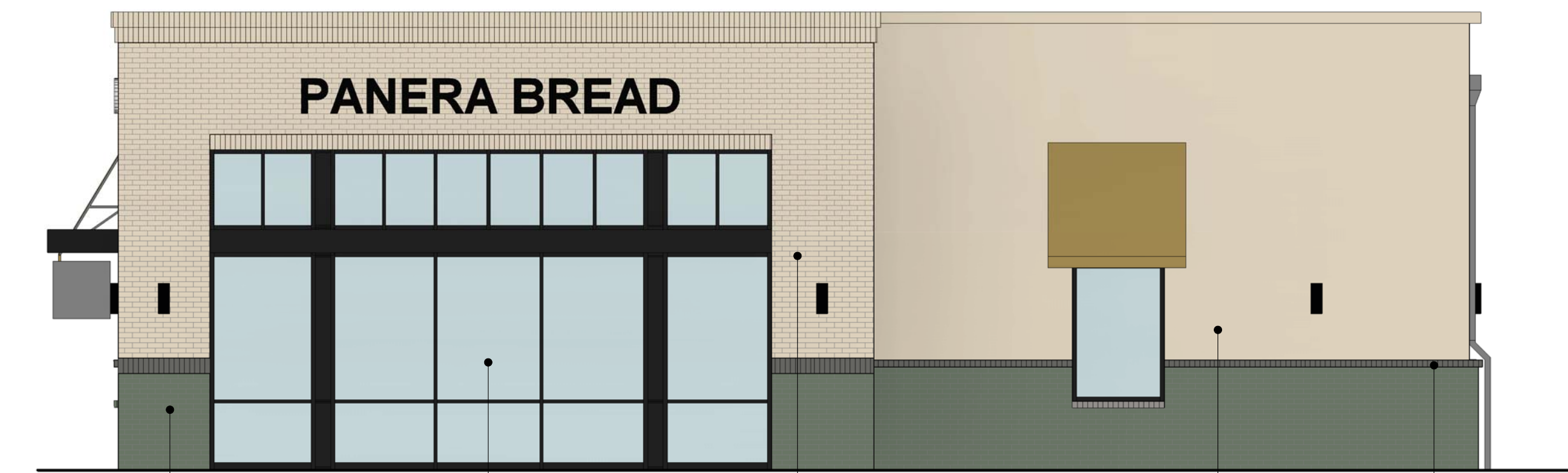
1 A303 - WEST  
3/16" = 1'-0"



2 A303 - NORTH  
3/16" = 1'-0"



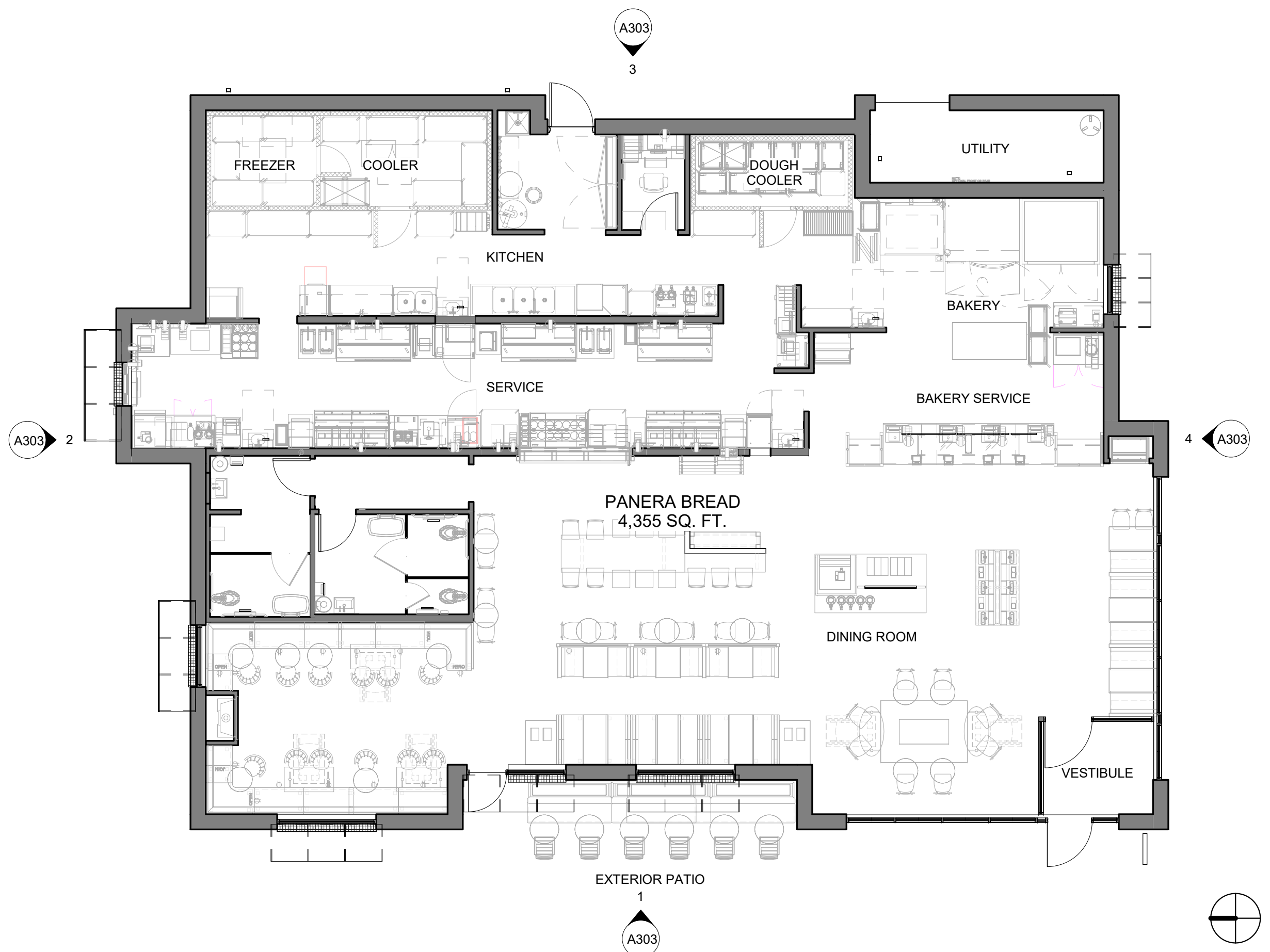
3 A303 - EAST  
3/16" = 1'-0"



4 A303 - SOUTH  
3/16" = 1'-0"



5 3D PERSPECTIVE  
12" = 1'-0"



6 CONCEPT PLAN  
1/8" = 1'-0"

Bakery-Cafe:

#6086

SYSTEM: G4 (ARIA)

Project Team:

NORR

325 N. LaSalle St. | Suite 500 | Chicago, IL 60654  
t 312.424.2400 | f 312.424.2424 | www.norr.com

Professional Seal:

Project Title:

Bakery Cafe #6086  
RIVERSIDE AVE & VALLEY  
BLVD  
RIALTO, CA 92376



COPYRIGHT (C) NORR, INC. ALL RIGHTS RESERVED.  
NO PART OF THIS DOCUMENT MAY BE  
REPRODUCED, STORED IN A RETRIEVAL SYSTEM,  
OR TRANSMITTED IN ANY FORM OR BY ANY MEANS,  
ELECTRONIC, MECHANICAL, PHOTOCOPYING,  
RECORDING, OR OTHERWISE, WITHOUT THE  
EXPRESS WRITTEN CONSENT OF NORR INC. ANY  
MODIFICATIONS MADE TO THIS DOCUMENT  
WITHOUT THE WRITTEN PERMISSION OF NORR INC.  
SHALL RENDER IT INVALID AND UNUSABLE.  
THIS DRAWING HAS BEEN PREPARED SOLELY FOR  
THE USE OF PANERA BREAD AND THERE ARE NO  
REPRESENTATIONS OF ANY KIND MADE BY NORR  
INC. TO ANY PARTY WITH WHOM NORR INC. HAS  
NOT ENTERED INTO A CONTRACT.

No.	Description	Date

CONCEPT  
ELEVATIONS

Project Number:

Sheet Number:

NICH17.0382

Drawn By:

D. BABNIGG

Issue Date:

02.05.2018

DPM:

BS

DM:

IO

CPM:

ME

A303